

# Livermore

# Lithogram



**Volume XXXV, Number 2  
February 2010**

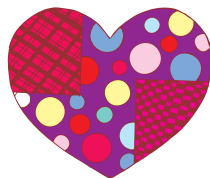
**Livermore Valley Lithophiles  
Livermore, California**

Next General Meeting:  
Thursday, February 11, 2010  
Carnegie Building, 4th and 'J' Streets  
7:30 PM

**Program:** DVD on the 'Black Chasm Cavern National Landmark', near Volcano / Jackson, California.  
**'Will be a future club fieldtrip.'**

Next Board Meeting:  
Thursday, February 25, 2010  
The SHOP, 7:30 PM  
Members are welcome to attend!

**Refreshments:**  
Larry Patzkowski and Patti Iannucci



**Inside this issue:**

More of President's Message	<b>2</b>
General Meeting Minutes 1-14	<b>2</b>
Board Meeting Minutes 1-28	<b>4</b>
Announcements	<b>5</b>
California Shows & Events	<b>6</b>
Field Trips	<b>7</b>

**Presidents Message:**

Perspiration? Nervousness? Stammering? How do you react to stress? Mother Earth may emit very low frequency electromagnetic waves, effect the ionosphere, cause magnetic field variations, produce infrared emission visible in night-time satellite images, and/or change haze, fog and cloud formations near the ground. Such changes can be precursors to earthquakes, Michelle Newcomer and her advisor Professor Friedemann Freund explained to us at the January 14 meeting. This was Michelle's first presentation of this topic to the general public, and her Power Point Program was well received. She showed how pressure is applied to stacks of igneous rocks such as those we helped her buy, and what the resulting electromagnetic field changes look like. Nice program, Michelle.

At last, we have a complete official Board of Directors: Pat Iannucci, Bill Beiriger, and Deloris Colonna. All were present at the last Board Meeting along with Officers. The room seemed warmer. Thanks all.

**Presidents Message continued on page 2**

## President's Message

Continued from page 1.

Some of us will miss the Feb. 11 meeting while at the Tucson Show, but please try to attend. The program will be an interesting DVD on the Black Chasm, near Jackson in the Mother Lode belt. This is tentatively planned as a field trip site for the weekend of the Angels Camp show, March 27 & 28. Also, you will want more details on two workshops almost upon us: Carving and Wire wrapping in March, the limit for each workshop is six.

Bob Trimingham, President

## Minutes of the General Meeting

January 14, 2010

The meeting was called to order at 7.33 PM by President Bob Trimingham.

**Guests:** Our guests were Ms. Michelle E. Newcomer and Dr. Friedmann Freund.

**Program:** Ms. Newcomer, a Master of Science student in Geoscience at San Francisco State University, gave our program. Her advisor, Dr. Freund, supported her in her presentation. The presentation's topic was "Aqueous Geochemical Changes in Groundwater Along Mechanically Stressed Igneous Rocks." Ms. Newcomer's topic basically dealt with the various subtle physical, chemical, and electromagnetic changes affected by compressive loads on samples of silicate-bearing rocks, chiefly granite and gabbro rock types used in her experiments (our club helped finance the acquisition of the rock samples). According to her research, and that of others, these subtle changes also occur as rocks are stressed by seismic forces and their measurement may lead the way to earthquake prediction. Ms. Newcomer handed out a pamphlet describing very similar research conducted by Dr. Freund.

**Break:** Our break was taken after the program.

**Correspondence:** Miscellaneous show flyers.

**Treasure's report:** Diane Day gave the treasure's report.

**New Members:** None

**Minutes:** There were no minutes to approve.

**Shop Report:** None.

**Work Shops:** Jan Watling will present a work shop on square wire wrapping for up to 6 people in March. Dick Friesen may conduct a carving class.

**CFMS Report:** None. Bob Whiteside will continue as our CFMS representative.

**Field Trips:** Check the Lithogram for a listing of Federation field trips. A field trip to the Chabot Science Center may be organized.

**Program:** Al Hess will present a program on Black Chasm for the February meeting.

**Lithorama:** Patti Iannucci discussed several aspects related to the Lithorama. Items discussed included dropping the favorite case voting; possibly dropping the raffle; obtaining better door prizes; and raising the entrance fee to \$5.00. Bill Beiriger indicated that he may have fossils for the kid's section. Our show banner will not be allowed on 4th Street as the city has preempted that location. We will have to hang it under the railroad over crossing on North Livermore Avenue this year. A new show chairman is needed for this year. More discussion and final resolution of the above items will take place at the Board Meeting.

**Lithogram:** Bill Beiriger stated that the January issue would be the last issue containing his articles on sand. We need articles of interest from members.

**Website:** A secure page will be included on the website containing our roster, member's addresses, phone numbers, and e-mail addresses. The page and code numbers for access will be developed.

**Schools:** Bill Beiriger gave a brief report on his school activities. A number of presentations had been given recently. He attended a meeting with school science teachers regarding the Science Fair at Junction School on March 18. The Pleasanton/Dublin schools' Science Fair will also be held this spring. Student crystal growing will be undertaken at the Livermore schools again this year. We have provided kits for the students in the past. A slight increase in our outlay, about \$350.00, was suggested by Bill Beiriger. Al Hess made a motion to allocate \$350.00 to the schools; Rich Hunt second the motion. The motion passed.

**Festivals:** There was some discussion about the Wine and Honey Festival and whether or not we should participate. Diane Day had e-mailed the organizers but had not received a response. She will follow up. We may participate in the Children's Fair this year. These matters are still undecided.

**Board of Directors:** Three members were appointed to comprise our Board of Directors: Bill Beiriger, Patti Iannucci, and Deloris Colonna.

**Refreshments:** Larry Patzkowski and Patti Iannucci will bring refreshments for the February 11 meeting.

The meeting adjourned at 9:20 PM  
Larry Patzkowski, Secretary

## ***DUES ARE DUE!***

**Send Dues to Diane Day or bring to the next meeting.**

**Please place in an envelope marked dues.**

**Don't just throw cash on the table.**

## Minutes of the Board Meeting

January 28, 2010

The meeting was called to order at the Barn at 7.25 PM by President Bob Trimmingham.

Those also in attendance included Delores Colonna, Bill Beiriger, Diane day, Jim Gruver, Chris Hunt, Patti Iannucci, and Bob Whiteside.

**Correspondence:** Diane day had correspondence from the Franchise Tax Board related to our tax exempt status; statements from the Board of Equalization regarding raffle items; and, a bank statement regarding our CD.

**Treasure's report:** Diane Day gave an update of the treasure's report.

**Program:** Al Hess will present a DVD program on Black Chasm, located near Jackson, for the February meeting. The program for March may be on diatomaceous earth?

**Field Trips:** A field trip to Black Chasm, possibly in conjunction with the Angles Camp show in April, may be possible.

**Lithogram:** Bill Beiriger re-stated that the January issue would be the last issue containing his articles on sand. We need articles of interest from members.

**Work Shops:** Jan Watling will present a work shop on square wire wrapping for up to 6 people in March. Dick Friesen may conduct a carving class. Bill Beiriger will attempt to get dates of these workshops to include the next Lithogram.

**Shop Report:** No shop report. However, the shop has been busy.

**CFMS Report:** Bob Whiteside indicated that the next semi-annual meeting will be down south (Whittier?). Our changes in officers will be sent to the Federation, as required.

**January Program:** After discussion, the Board approved a stipend of \$75 for Ms. Michelle Newcomer, our program presenter for January. Bill Beiriger made the motion and Delores Colonna second the motion.

**Festivals:** The Board decided to pass on the Wine and Honey Festival this year. The Children's Fair may be considered once we get details.

**Fair Case:** Diane Day will work on the fair case. She would appreciate any suggestions.

**Schools:** Bill Beiriger gave a brief report on his school activities. A number of presentations had been given recently. He noted that students have become more respectful to teachers and guest speakers over the last several months. Of special interest was his recounting of a presentation he made to a number of 'Mentally Challenged' students and how well they responded. The teachers are preparing a list of books

and videos/DVDs that they would like to obtain. The Club will consider how we can help. Rock cycle boards may also be prepared for the schools.

**Lithorama:** Patti Iannucci discussed several aspects related to the Lithorama. Items discussed included the need for kitchen workers to use gloves; LAPRD not having enough tables on hand; and the banner. As previously reported, our show banner will not be allowed on 4th Street as the city has preempted that location this year. We will have to hang it at the railroad over crossing on North Livermore Avenue this year.

**Refreshments:** Larry Patzkowski and Patti Iannucci will bring refreshments for the February 11 meeting.

The meeting adjourned at 8:10 PM

Larry Patzkowski, Secretary

## *Announcements*

### **Square-Wire Jewelry Class**

**The Lithophiles will offer a Square-Wire Jewelry Class in March.  
The date will be decided on by the individuals that are going to take the class.**

**The class will be limited to about six people.**

**Jan Watling will be the instructor.**

**The class will be about four hours long.**

**It will most likely offered on a Saturday.**

***NOTE: AS OF NOW THE CLASS IS FULL - BUT SIGN-UP AS A STAND-BY.***

**Please see Diane Day or Bob Trimmingham at the next meeting.**

### **Rock Carving Class**

**The Lithophiles will offer a Rock Carving Class in March.**

**The class will be limited to about six people.**

**Dick Friesen will be the instructor.**

**Please see Diane Day, at the February meeting.**

**Dick will be out of town until the latter part of February.**

### **13" x 9" x 2" Cake Pan**

**Left in BARN Kitchen after Lithorama**

**If it is yours call Bill Beiriger 443-5769**

# California Shows And Events

## 2010

**March 5-6-7 2010**, Newark, CA  
**Mineral and Gem Society of Castro Valley  
 Newark Pavilion - NEW LOCATION**  
 6430 Thornton Avenue, Newark, CA 94560  
 Hours: Fri & Sat. 10-6; Sun. 10-5  
 Lary Ham (510) 887-9007  
 Email: showchair@mgscv.org  
 Website: www.mgscv.org

**March 13-14 2010**, Turlock, CA  
**Mother Load Mineral Society**  
 Stanislaus Co. Fairgrounds  
 900 N Broadway  
 Hours: Sat. 10-6 Sun. 10-5  
 Bud & Terry McMillin (209) 524-3494  
 Email: terry.mcmillin@yahoo.com  
 Website: www.turlockgemshow.com

**March 20-21 2010**, Vallejo, CA  
**Vallejo Gem & Mineral Society**  
 Vallejo Elks Lodge  
 2850 Redwood Parkway  
 Hours: 10 - 5 daily  
 Phylis Malacki (707) 745-3255  
 Email: Vgms01@yahoo.com  
 Website: www.iwired.org

**March 27-28 2010**, Roseville, CA  
**Roseville Rock Rollers**  
 Roseville (Placer Co.) Fairgrounds  
 800 All American City Blvd.  
 Hours: Sat. 10-5 Sun. 10-4  
 Glori Marie (916) 216-1114  
 Email: gloriarosevillerockrollers@gmail.com  
 Website: www.rockrollers.com

**March 27-28 2010**, Angels Camp, CA  
**Calaveras Gem and Mineral Society**  
 Calaveras Co. Fairgrounds  
 Angels Camp on Hwy 49  
 Hours: Sat. 10-5 Sun. 10-4  
 Camping contact: Tom or Sue Reeves (209)  
 754-4863

**April 16, 17, 18, 2010**, San Jose, CA  
**Santa Clara Valley Gem & Mineral  
 Society**  
 Santa Clara County Fairgrounds  
 334 Tully Road  
 Hours: Fri 9-5, Sat & Sun 10-5  
 Frank Mullaney (408) 265-1422  
 Email: info@scvgms.org  
 Website: www.scvgms.org

**June 18, 19, 20, 2010**, Whittier, CA  
**CFMS / AFMS / NOCGMS SHOW**  
**North Orange County Gem & Mineral  
 Society**  
 website www.nocgms.com/show/index.htm

**November 20-21, 2010** Livermore  
**LITHORAMA 2010 Show and Sale,  
 Livermore Valley Lithophiles Gem &  
 Mineral Society**; The 'BARN' 3131  
 Pacific Ave. east of Livermore Ave.  
 Hours: Sat. 10-5; Sun. 10-4. Visit us  
 at our website www.lithophiles.org

Show information is available at  
 the California Federation of Min-  
 eralogical Societies website: [www.cfmsinc.org](http://www.cfmsinc.org)

### Additional Resources:

**American Federation of Mineralogi-  
 cal  
 Societies website: [www.amfed.org](http://www.amfed.org)**

**American Lands Access Association  
 website: [www.amerlands.org](http://www.amerlands.org)**

**CO-OP website: [www.coop.freeserv-  
 ers.com](http://www.coop.freeserv-<br/>
  ers.com)**

The California Federation of Mineral-  
 ogical Societies web page  
**[www.cfmsinc.org](http://www.cfmsinc.org)** gives everyone  
 access to the CFMS Newsletter.

## OUR WEB PAGE!

Please visit the Lithophile's web page and goto the 'Exchange Newsletters Page. We have newsletters from several other clubs.

**Shop open every Tuesday at 7:00 PM**

**General Meeting Feb. 11th at 7:30 PM**

**Board Meeting Feb. 25th at 7:30 PM**

## *Field Trips*

**April 2-4, 2010** Black Butte Reservoir, CA, for jasper, sponsored by Mother Lode Mineral Society (CO-OP)

**April 9-10, 2010** Stoneyford, CA, for various jaspers and agates, sponsored by Sutter Buttes (CO-OP)

**April 17-18, 2010** Fallon, NV, for leaves in rhyolite, sponsored by Fossils For Fun (CO-OP)

**May 15-16, 2010** Majuba Mtn, NV, for various minerals, sponsored by Nevada County GMS (CO-OP)

**May 22-23, 2010** Talapoosa Mtn, NV, for agate, sponsored by El Dorado MGS (CO-OP)

**May 29-30, 2010** Petersen Pk, Virginia City, NV, for quartz crystals, sponsored by Sutter Buttes (CO-OP)

### *Livermore Science Odyssey!*

**The Livermore Schools Science Fair will be held on  
Thursday March 18th.**

**It would be nice to have a couple of new members help  
with this project.**

**Please call Bill Beiriger - 443-5769**

**Now I need the help of the members of this society to submit new articles,  
stories, how to's or field trips / vacations you have taken.**

Bill Beiriger - Editor

## Livermore Valley Lithophiles

Bill Beiriger, Editor  
P.O. Box 626  
Livermore, CA 94551-0626  
info@lithophiles.com

We're on the Web at [www.lithophiles.org](http://www.lithophiles.org)



## Elected Officers and Club Information

### Elected Officers:

**President**     **Bob Trimmingham (925) 443-5983**  
**V. President**   **Chris Hunt (925) 443-5525**  
**Secretary**     **Larry Patzkowski (925) 426-7768**  
**Treasurer**     **Diane Day (925) 606-0888**

**Membership:** The Livermore Valley Lithophiles invites to its membership anyone genuinely interested in minerals, gems, lapidary, geology or any of the other earth sciences, and who desires association with others of like interests. Membership in our club consists of three classes: Senior, anyone eighteen years or older; Junior, anyone under eighteen; and Honorary. Dues are for the calendar year and are as prescribed in the by-laws, Article III. \$25.00 per family, \$20.00 per individual and \$10.00 for Juniors (twelve and older.)

**Meetings:** General Meeting – Second Thursday of each month, 7:30 p.m. at the Carnegie Building, 4th and J Streets, Livermore. Board Meeting – Fourth Thursday of each month, 7:30 p.m. at the Club Shop or to be announced in the *Lithogram*. Any special meetings or places will be published in the *Lithogram*.

**Club Shop:** The shop at the Barn is open to club members 7:00 p.m. to 10:00 p.m.. on Tuesday nights. If no one arrives by 7:30 p.m.. or if the Shop Foreman has not been informed a member will arrive late, then the shop will close at 7:30 p.m. Call Lynn Zirkle, Shop Foreman, at (925) 443-2920.

**Field Trips:** Location and date will be published in the *Lithogram*.

**Bulletin:** *Livermore Lithogram*. Published monthly and mailed or emailed to active members and guests. News of interest, reports and articles must be received by the first Tuesday of the month. Articles may be reprinted by giving proper credit.

**Editor:**  
Bill Beiriger,  
Livermore, CA 94551-0626,  
email: info@lithophiles.com

**Shop open every Tuesday at 7:00 PM**

**General Meeting Feb. 11th at 7:30 PM**  
**Board Meeting Feb. 25th at 7:30 PM**